

INSTITUT  
FRANÇAIS

Ecosse

**ROOM HIRE**  
**at Institut français d'Écosse**

Part of a worldwide network, the Institut français d'Écosse not only promotes French Language and culture, it also encourages cross-cultural exchanges and cultural diversity.

Remarkably located at the heart of Edinburgh's Old Town along the world-renowned Royal Mile and facing the impressive St Giles cathedral, the French Institute in Scotland offers a variety of venues for cultural, business and social events.

Whether you want to organise a business meeting, a corporate seminar, a cinema screening, a private reception or even thig the knot in sumptuous surroundings, we have the perfect space for the occasion.

Named after important contributors to Franco-Scottish relations, each space offers flexible settings and are fully accessible with step-free access and lifts available.

We look forward to welcoming you to the Institut Français d'Écosse!



# Capacities - Salle Émilienne Moreau-Evrard [EME]



**AUDITORIUM  
CINEMA  
BALLROOM**

VIEW OVER WEST PARLIAMENT  
SQUARE AND ST GILES CATHEDRAL

FIRST FLOOR

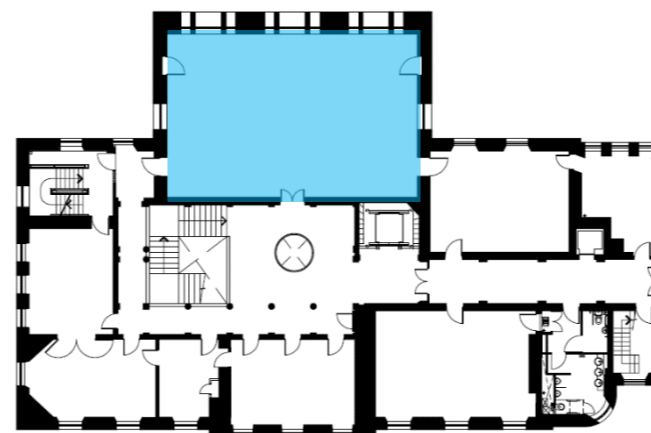
Presentations (PowerPoints)  
Blackout Blinds  
Lighting Effects  
External catering only  
WiFi

## Seating arrangements

Theatre 74  
Reception (standing) 120

Cabaret 30

128m<sup>2</sup>



	MON-FRI	WEEKEND
<b>PER HOUR</b>	£140	£210
<b>HOUR BEFORE 9AM OR AFTER 9PM</b>	£180	N/A
<b>HALF DAY (4H)</b>	£420	£630
<b>DAY (8H)</b>	£700	£1,050

# Capacities - Salle Duchesse d'Angoulême



**LOUNGE**  
**NETWORKING**  
**CATERING AREA**

VIEW OVER WEST PARLIAMENT SQUARE  
AND ST GILES CATHEDRAL

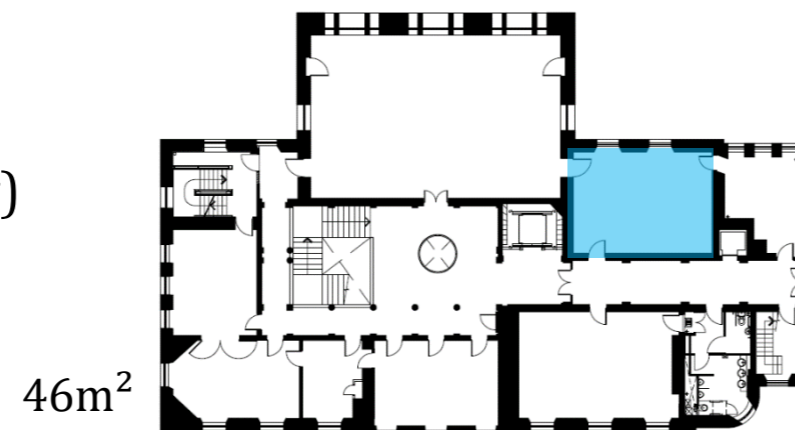
FIRST FLOOR

Interconnected with Salle EME & a kitchen  
External catering only  
WiFi

## Seating arrangements

Lounge  
10

Reception (standing)  
30



	Angoulême		Angoulême + EME	
	MON-FRI	WEEKEND	MON-FRI	WEEKEND
<b>PER HOUR</b>	£60	£90	£175	£265
<b>HOUR BEFORE 9AM OR AFTER 9PM</b>	£100	N/A	£215	N/A
<b>HALF DAY (4H)</b>	£180	£270	£525	£795
<b>DAY (8H)</b>	£300	£450	£795	£1,325

# Capacities - Salle Philippe Kieffer



## MEETING ROOM WORKSHOP

NOBLE STYLE

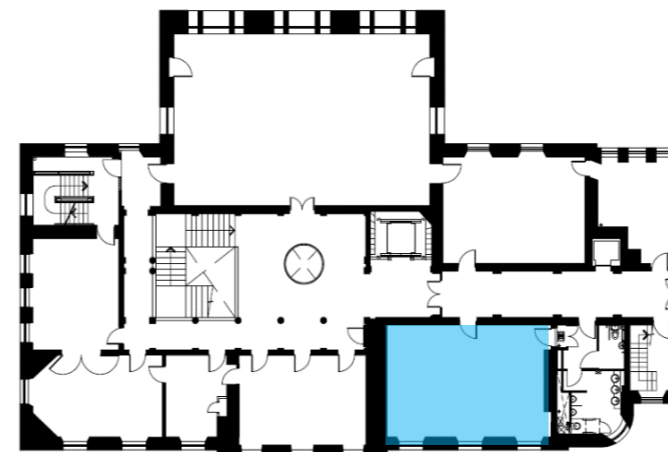
FIRST FLOOR

TV screen (presentations, video calls)  
External catering only  
WiFi

### Seating arrangements

Boardroom	U-shape	Cabaret (standing)
16	16	25

55m<sup>2</sup>



	MON-FRI	WEEKEND
<b>PER HOUR</b>	£60	£90
<b>HOURLY BEFORE 9AM OR AFTER 9PM</b>	£100	N/A
<b>HALF DAY (4H)</b>	£180	£270
<b>DAY (8H)</b>	£300	£450

# Capacities - Salle Pierre Boulez



WORKSHOP  
RECEPTION  
MEETING SPACE

VIEW ON HIGH COURT & ROYAL MILE

L-SHAPED ROOM

FIRST FLOOR

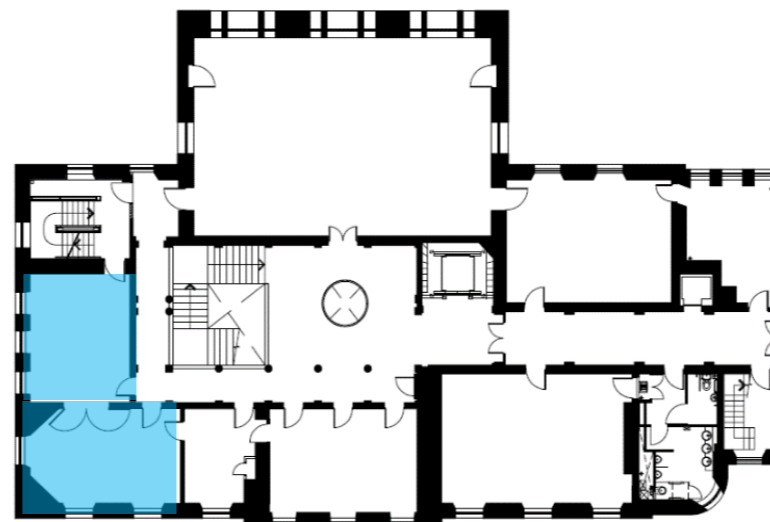
External catering only  
WiFi



## Seating arrangements

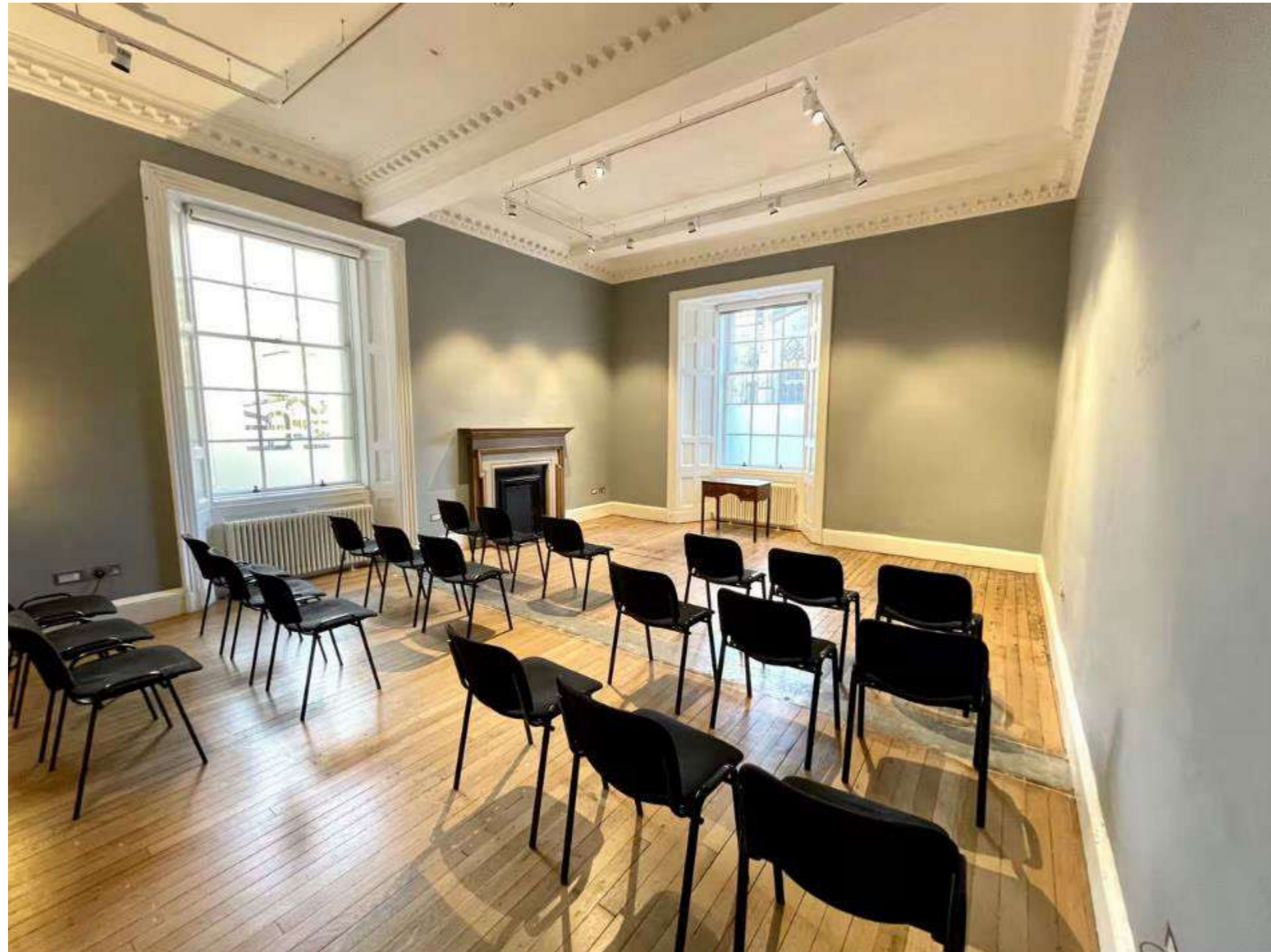
Seats	Standing
16	40

57m<sup>2</sup>



	MON-FRI	WEEKEND
<b>PER HOUR</b>	£60	£90
<b>HOURLY BEFORE 9AM OR AFTER 9PM</b>	£100	N/A
<b>HALF DAY (4H)</b>	£180	£270
<b>DAY (8H)</b>	£300	£450

# Capacities – Galerie Jacques Tati



**CONFERENCE  
RECEPTION  
EXHIBITION**

VIEW ON ROYAL MILE & ST GILES  
CATHEDRAL

GROUND FLOOR

TV Screen (presentations, video calls)  
External catering only  
WiFi

## Seating arrangements

Boardroom  
16

U-shape  
16

Cabaret (standing)  
25

54m<sup>2</sup>

	MON-FRI	WEEKEND
<b>PER HOUR</b>	£90	£135
<b>HOUR BEFORE 9AM OR AFTER 9PM</b>	£130	N/A
<b>HALF DAY (4H)</b>	£270	£405
<b>DAY (8H)</b>	£450	£675

# Capacities – le Foyer



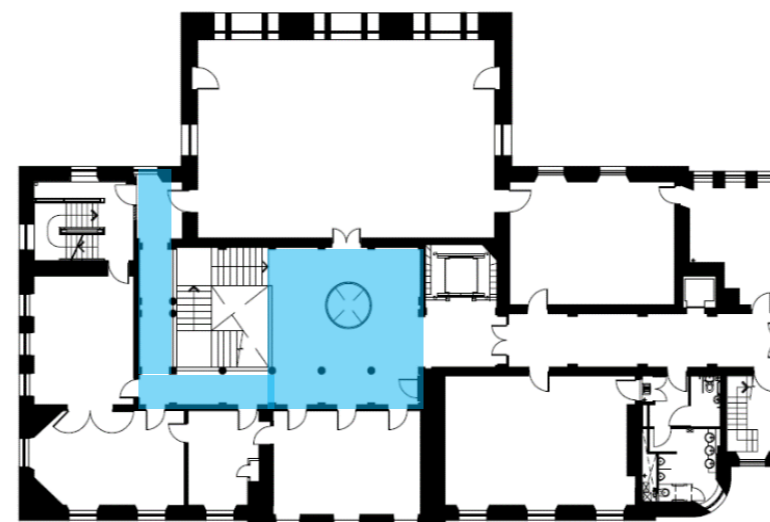
## PHOTOSHOOT COCKTAIL RECEPTION

NOBLE STYLE & MARBLE  
RED CARPETED STAIRS  
FIRST FLOOR

External catering only  
WiFi

### Seating arrangements

Standing  
40



	MON-FRI	WEEKEND
<b>PER HOUR</b>	£60	£90
<b>HOUR BEFORE 9AM OR AFTER 9PM</b>	£100	N/A
<b>HALF DAY (4H)</b>	£180	£270
<b>DAY (8H)</b>	£300	£450



# Capacities – Classrooms

## Large classroom



**CLASSES**  
**WORKSHOP**  
**MEETING**

4 LARGE CLASSROOMS

4 SMALL CLASSROOMS

SECOND FLOOR

Computer with projector  
White board  
External catering only  
WiFi

## Seating arrangements

Seating  
15

	MON-FRI	WEEKEND
<b>PER HOUR</b>	£40	£60
<b>HOUR BEFORE 9AM OR AFTER 9PM</b>	£80	N/A
<b>HALF DAY (4H)</b>	£120	£180
<b>DAY (8H)</b>	£200	£300

## Small classroom



## Seating arrangements

Seating  
5

	MON-FRI	WEEKEND
<b>PER HOUR</b>	£25	£38
<b>HOUR BEFORE 9AM OR AFTER 9PM</b>	£65	N/A
<b>HALF DAY (4H)</b>	£75	£113
<b>DAY (8H)</b>	£125	£188

# Capacities – Roof



## FILMING

VIEW ON WEST PARLIAMENT SQUARE & ROYAL MILE

THIRD FLOOR

### Seating arrangements

Standing

5

	MON-FRI	WEEKEND
<b>PER HOUR</b>	£150	£220
<b>HOUR BEFORE 9AM OR AFTER 9PM</b>	£190	N/A
<b>HALF DAY (4H)</b>	£450	£660
<b>DAY (8H)</b>	£750	£1,100

# Capacities – Parking



## PARKING FILMING

VIEW ON WEST PARLIAMENT SQUARE &  
ROYAL MILE

8 PARKING PLACES

Accessible entrance with lift  
Deliveries

£250 per day

INSTITUT  
FRANÇAIS

Ecosse

Institut français d'Ecosse  
West Parliament Square  
Edinburgh EH1 1RN

Tel: +44 (0)131 285 60 30

Email: [frenchclassesife@gmail.com](mailto:frenchclassesife@gmail.com)